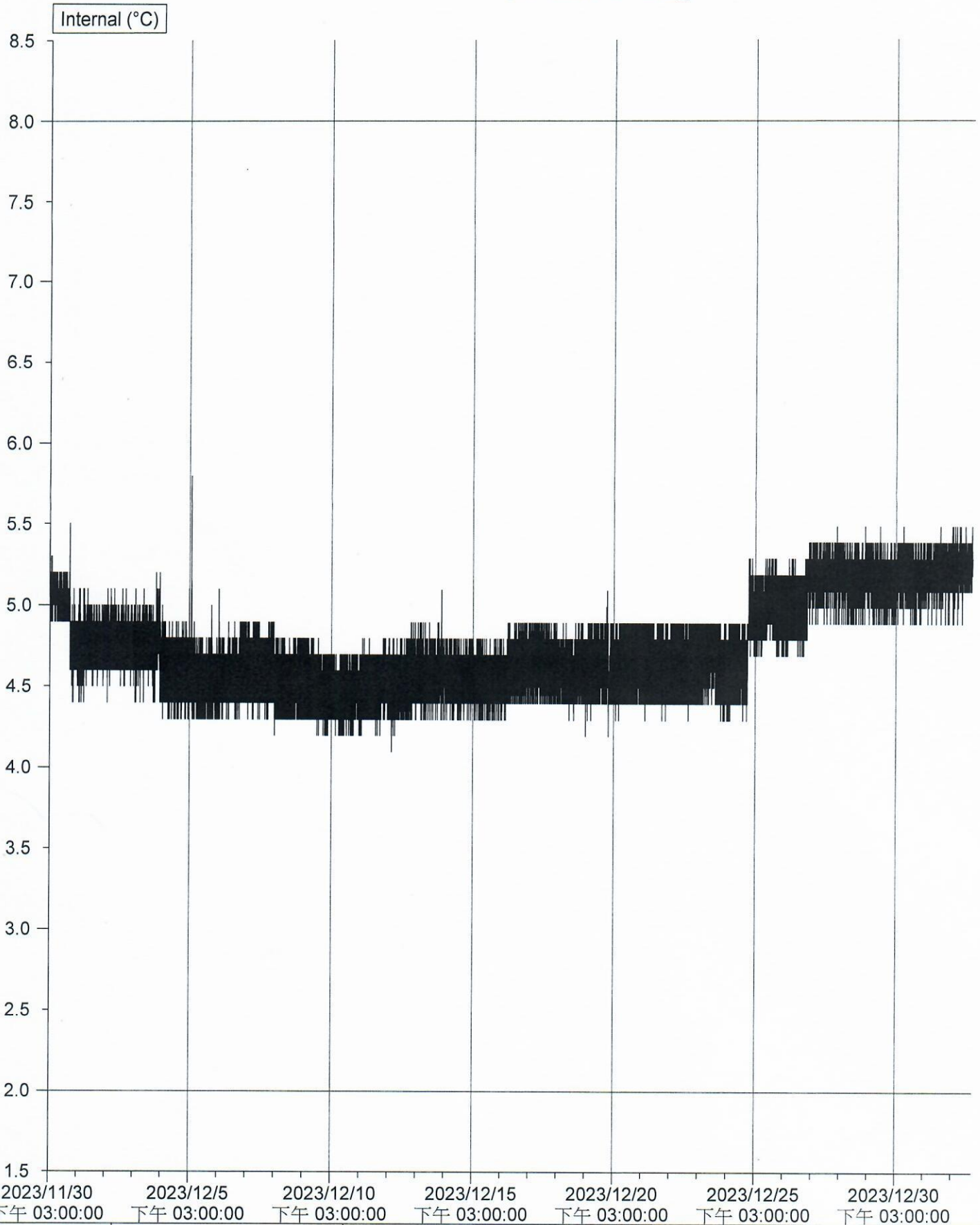


# TCVGH Temperature Log



Sensor Name	Internal
Legend	
Description	PHCL-C012
Serial Number	1715-0141
Product Code	EI-IN-D-32-L
Start	2023/11/30 下午 03:00:00
Finish	2024/1/2 上午 08:30:00
Sensor Range	-40.5 to 70.4 °C
Specification	2.0 to 8.0 °C
Average	4.8 °C
Highest	5.8 °C
Lowest	4.1 °C

YuanenSu  
02 Jan 2024